



SANTERRA-QUILICI SAD DEPOSIT AGREEMENT

E

Toll Brothers
AMERICA'S LUXURY HOME BUILDER®

Santerra-Quilici Project

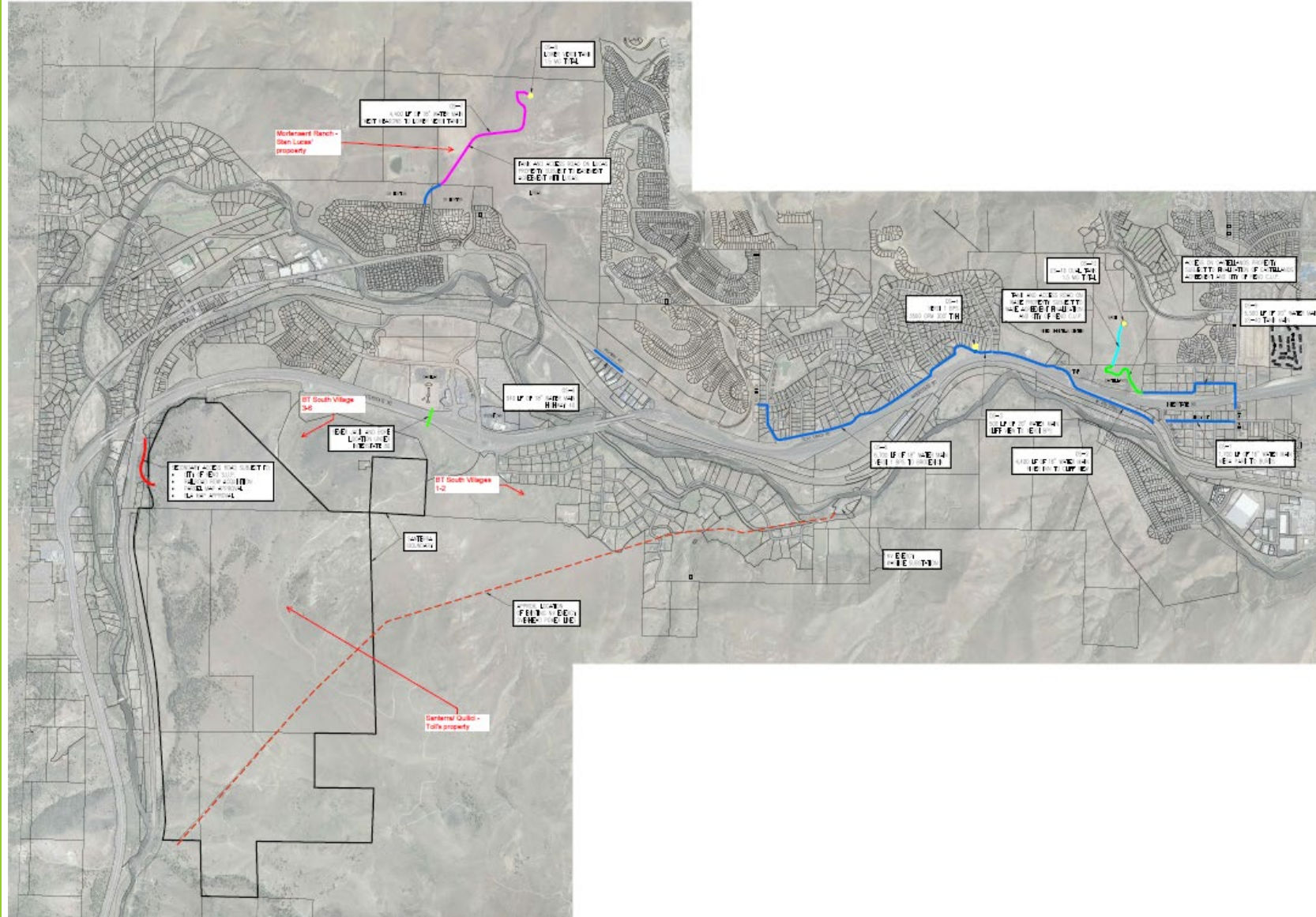
Key Points

- Tentative Map and related SUPs approved on March 24, 2021.
- 1,225 residential units
- 383 acres SF residential
- 697 acres open space (62% of site)
- 10 acres Neighborhood commercial
- 26 acres multi-family/community amenity
- 18 acre regional park site
- 5 acre neighborhood park
- 10 acre school site
- \$1608 per door and per 1000 sf commercial for fire facilities
- \$1000 per door to Reno Land Trust for affordable housing.
- \$150,000 for roadway safety improvements in Verdi.

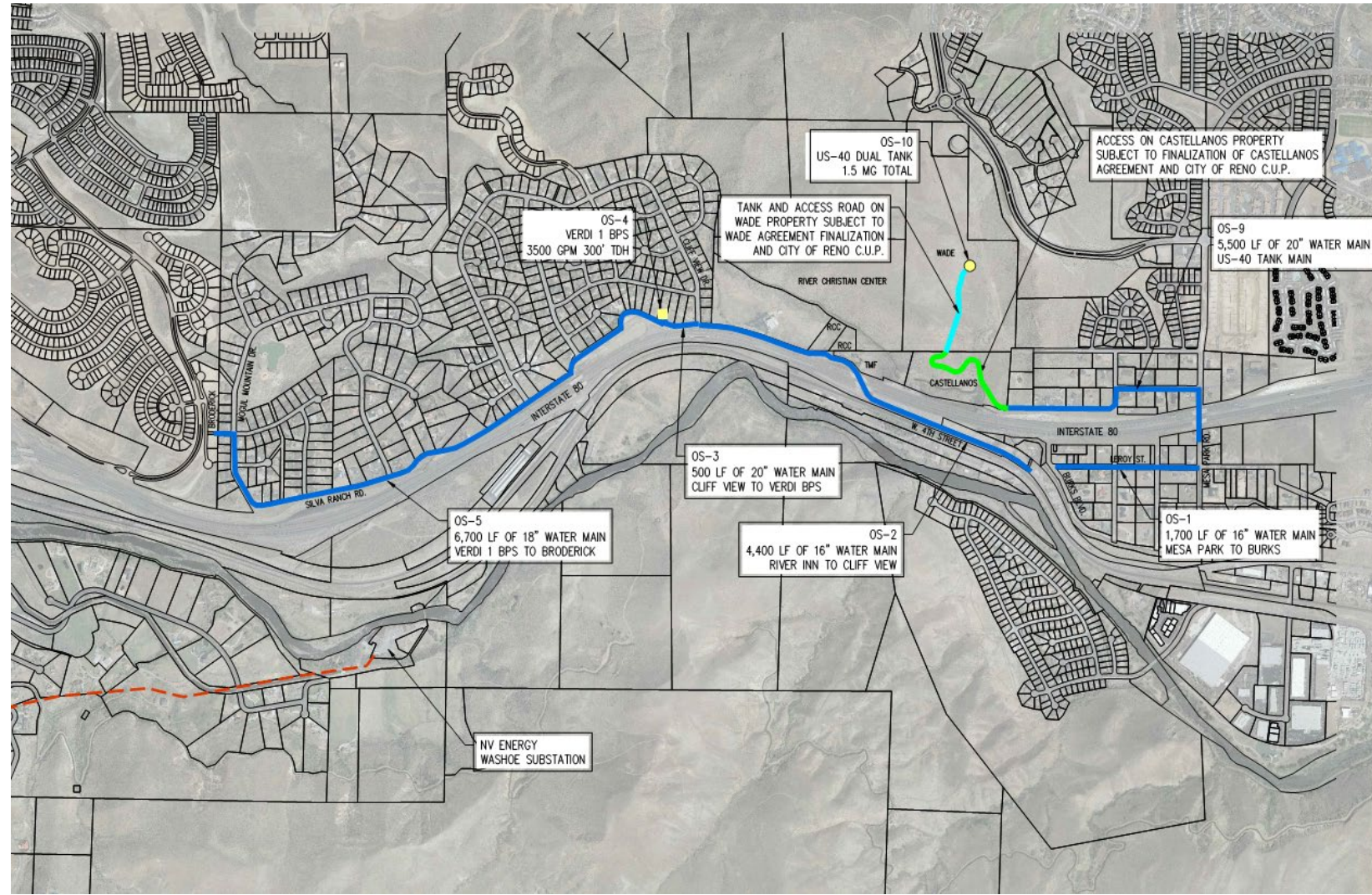


Offsite Utilities Exhibit (Expanded View)

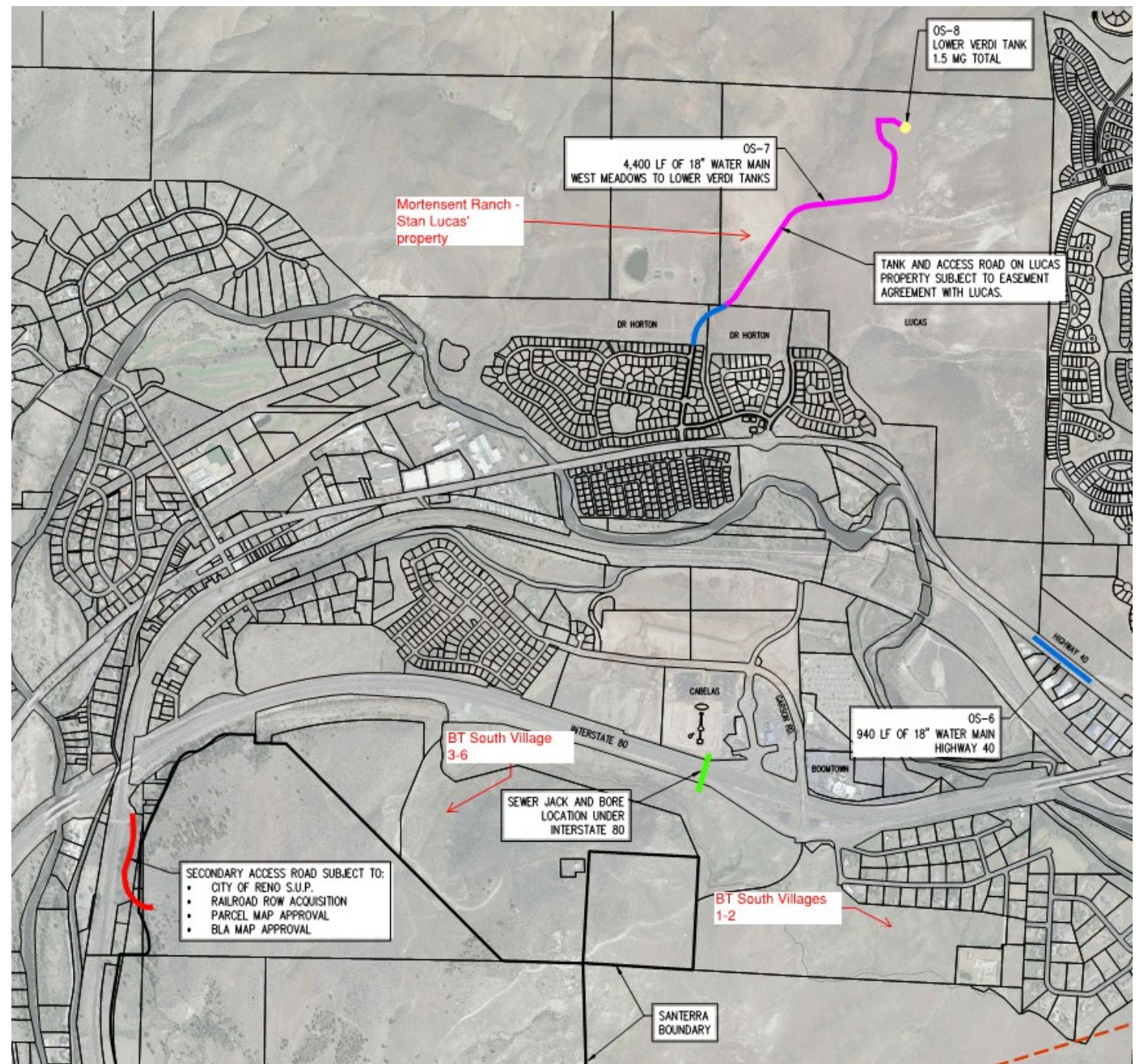
- TMWA will be water purveyor
- TMWA acquired West Reno Water System in March 2019
- Future extension of surface water system for conjunctive supply planned by TMWA
- Water main extensions, water tanks, and service mains will be built concurrently with development in accordance with TMWA requirements
- All utilities accessible and available and will be built concurrently with development



Offsite Utilities Exhibit (East end)



Offsite Utilities Exhibit (West end)





SANTERRA-QUILICI PROJECT

Toll Brothers
AMERICA'S LUXURY HOME BUILDER®